

**LAUNCH**

**LAUNCHING  
1st EDITION  
OF PCF'S  
NEWSLETTER**

**20th September, 2025**



Hillingdon PCF



Dear Parents and Carers,



Welcome to the first edition of Hillingdon's Parent Carer Forum newsletter. This is a space to share updates, resources, and experiences that support families of children and young people with special needs.

Our aim is to keep you connected, informed, and reassured that you are not alone on this journey. Thank you for joining us as we begin this new chapter together.

Warm regards,  
Nicola Barton  
Chair, Hillingdon's Parent Carer Forum



# Parent Carer's Forum

Official voice and a bridge between parent carers and local authority. We support families of children and young people with special educational needs and disabilities 0 to 25.



**SEND  
FAMILY  
DROP-INS**

## WHEN

**First Tuesday** of every month during **Term time**  
from **1 pm to 2pm**.

**7<sup>th</sup> October | 4<sup>th</sup> November | 2<sup>nd</sup> December**

## WHERE

See you at **South Ruislip  
Children's Centre**.



## FEEDBACK

We are here to **hear**, and **take your voice** forward  
to **local authority**. Tell us, and **lets together** make  
a difference.

## TIPS & IDEAS

To volunteer and get involved – write to us on  
**HillingdonPCF@Gmail.com**





# SENDIASS

We offer information and advice to parent/carers of children and young people with SEND, around their education. Visit website today to know more.

<https://www.hillingdonsendiass.co.uk>



Hillingdon  
**sendiass**  
Special Educational Needs Disability Information, Advice and Support Service

## DROP-INS



Date	Time	Location
Monday, 22 September	9:30 am to 11:30 am	Harefield Children's Centre
Friday, 26 <sup>th</sup> September	9:30 am to 11:30 am	Oak Farm Children's Centre
Tuesday, 30 <sup>th</sup> September	9:30 am to 11:30 am	Colham Manor Children's Centre.
Tuesday, 7 <sup>th</sup> October	1:00 pm to 3:00 pm	Uxbridge Family Hub
Wednesday, 15 <sup>th</sup> October	9:15 am to 10:45 am	Cherry Lane Children's Centre
Friday, 17 <sup>th</sup> October	1:00 pm to 2:30 pm	Yiewsley Children's Centre
Monday, 20 <sup>th</sup> October	9:30 am to 11:30 am	Pinkwell Children's Centre.
Tuesday, 28 <sup>th</sup> October	9:30 am to 11:30 am	Colham Manor Children's Centre

## TIPS & IDEAS

Guides and support parents, carers, and young people through the Education, Health and Care Plan (EHCP) process.



# Children's Integrated Therapy Service

A team of SaLT, OT, Physiotherapists, technicians and administrators, for children and young people aged 0 to 19.



## Mainstream Schools Speech and Language Therapy Training (2025-26)

Date	Time	Training Name
Wednesday 8th October 2025	2:00 pm to 3:00 pm	What is the Mainstream Schools SLT Service?
Thursday 6th November 2025	2:00 pm to 3:00 pm	Tools to support Neurodiverse Students with Social Communication Skills
Monday 1st December 2025	2:00 pm to 3:00 pm	Using visuals to support communication

**Zoom link:**

<https://us02web.zoom.us/j/83638053994?pwd=4akQXylOKefcxkEk2sDjJaymrCGkpX.1>



### Zoom Meeting Login Details

- Meeting ID: 836 3805 3994
- Passcode: 131832

More information and resources are available at the Children's Integrated Therapy Service website: [www.cnwl.nhs.uk/children-integrated-therapy-service](http://www.cnwl.nhs.uk/children-integrated-therapy-service).

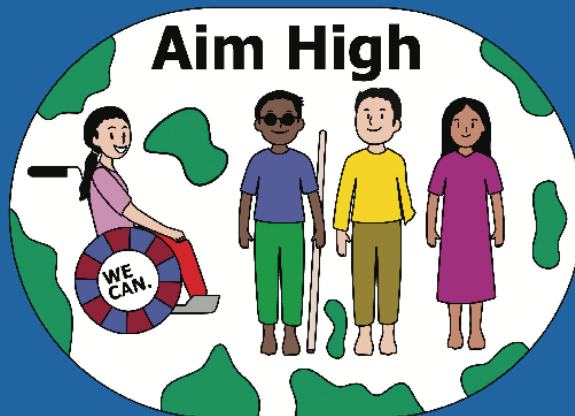


# WHAT's ON in Hillingdon!

Find out more activities and support for families of children with special educational needs and disabilities here...



HILLINGDON  
LONDON



Join our new forum for children and young people with Special Educational Needs and Disabilities. Help shape SEND services in the borough.

Find out more and sign up at

[www.hillingdon.gov.uk/send-youth-forum](http://www.hillingdon.gov.uk/send-youth-forum)

Click on the link below to find details on trainings and recourses.

- Virtual and in-person training, workshops
- Topics include autism, vision/hearing impairment, early development, transitions, and more.
- Course descriptions, booking, and contact details

Link: [bit.ly/4nwxNyQ](http://bit.ly/4nwxNyQ)



**SEND and Inclusion  
Training for Parents/Carers**



Thank You!

